



# DRONES IN FACILITY MANAGEMENT

# TABLE OF CONTENTS

**01** Introduction

**02** Efficiency & Cost Saving

**03** Safety and Risk Mitigation

**04** Real-Time Monitoring and Data Collection

**05** Rapid Emergency Response

**06** Security and Surveillance

**07** Conclusion

**08** Price Guide

**09** Contact Us

# INTRODUCTION

Facilities management companies are responsible for the maintenance and operation of commercial and industrial spaces, ensuring their smooth functioning and optimising their efficiency.

In recent years, the integration of drone technology has provided significant advantages to these companies, revolutionising the way they manage and maintain facilities.

Drones offer a wide range of applications, from routine inspections and data collection to emergency response and security surveillance.

This presentation will delve into the benefits of drones for facilities management companies, highlighting the positive impact they bring to the industry.

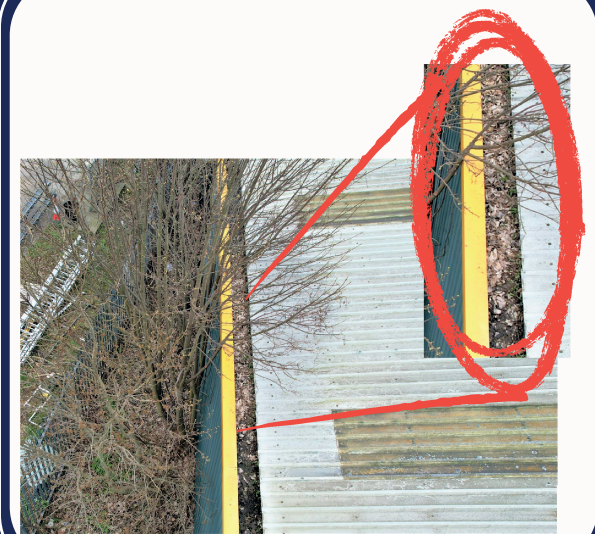


# EFFICIENCY AND COST SAVINGS

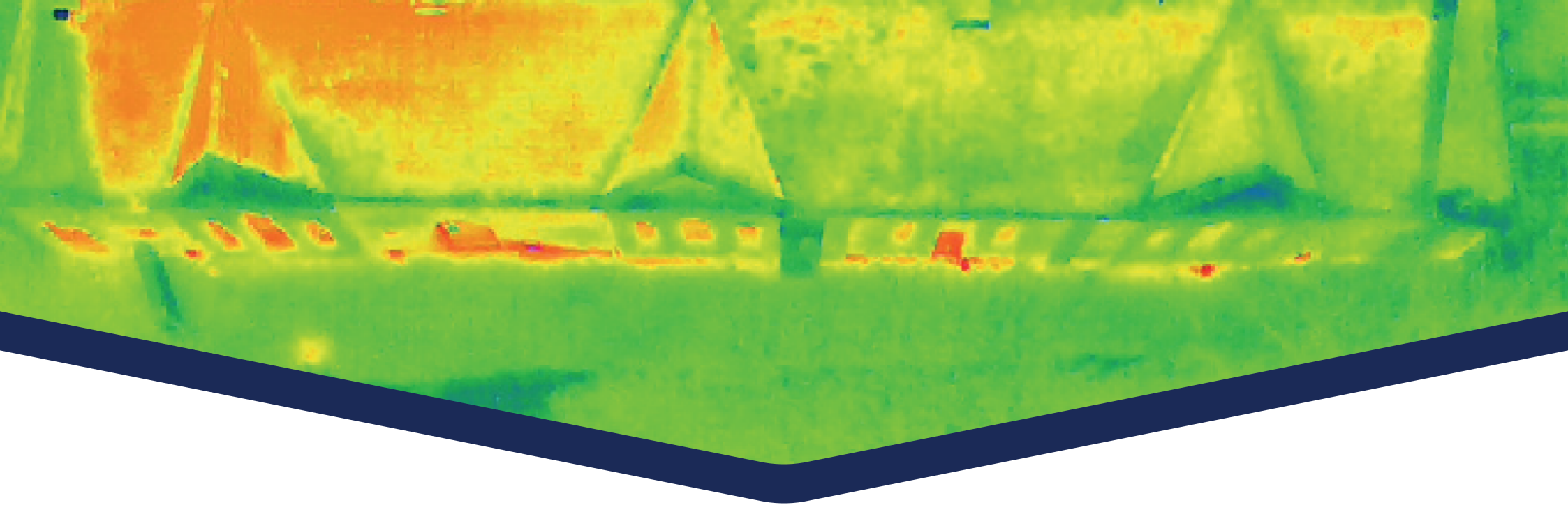
Drones enable facilities management companies to conduct inspections and surveys more efficiently and cost-effectively.

Traditionally, manual inspections required significant time, resources, and personnel. With drones, these tasks can be completed much faster and with reduced manpower.

Drones equipped with high-resolution cameras and sensors can quickly capture images and data from different angles, heights, and perspectives, providing a comprehensive view of the facility's condition. This enables facilities managers to identify maintenance issues, such as leaks, blocked guttering or structural damages promptly, facilitating faster repairs and preventing potential emergencies.







# SAFETY AND RISK MITIGATION

Maintaining safety standards is paramount in facilities management. Drones help minimise the risks associated with manual inspections in hazardous or hard to reach areas.

By deploying drones, companies can avoid exposing workers to potentially dangerous environments, such as rooftops, tall structures, or confined spaces.

Drones equipped with thermal imaging cameras can detect anomalies in electrical systems or identify heat leaks, reducing the risk of accidents or equipment failures.

Moreover, drones can be used to inspect infrastructure after natural disasters, such as storms, ensuring a timely assessment of damage without endangering human lives.

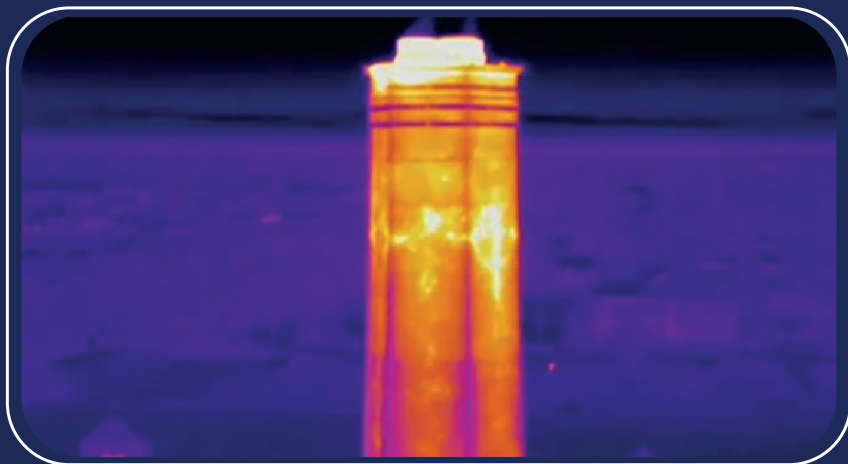
# REAL-TIME MONITORING AND DATA COLLECTION

Drones equipped with advanced sensors and cameras enable real-time monitoring and data collection, providing facilities management companies with valuable insights.

Live video feeds from drones allow managers to monitor ongoing operations, track progress, and ensure compliance with safety regulations.

Additionally, drones equipped with environmental sensors can gather data on air quality, temperature, humidity, and other parameters, helping optimise energy consumption and facility performance.

Analysing this data allows companies to identify patterns, make informed decisions, and implement proactive maintenance strategies, ultimately reducing costs and improving operational efficiency.





# **RAPID EMERGENCY RESPONSE**

In times of emergencies or critical situations, time is of the essence.

Drones equipped with cameras, loudspeakers, and thermal imaging capabilities can be deployed swiftly to assess emergency situations and provide real-time information to first responders and relevant personnel.

Whether it's a fire, a gas leak, or a security breach, drones can quickly navigate through the facility, capturing live footage and relaying crucial information to the emergency response team.

This expedites decision-making, facilitates effective emergency coordination, and potentially saves lives.

# SECURITY AND SURVEILLANCE

Security is a key aspect of facilities management.

Drones act as valuable tools for enhancing security measures and surveillance. Equipped with high-definition cameras and intelligent software, drones can monitor large areas and provide real-time video feeds to security personnel. They can patrol perimeters, detect unauthorised access, and identify potential security breaches.

Drones can also be programmed to perform automated security checks, reducing the risk of human error.



# CONCLUSION

Drones have revolutionised the way facilities management companies operate, offering numerous benefits that enhance efficiency, safety, and overall effectiveness.

By leveraging drone technology, these companies can optimise their operations, improve maintenance practices, and ensure the safety of both their workforce and the facilities they manage.

The ability to collect real-time data, perform inspections in hard to reach areas, and respond rapidly to emergencies makes drones indispensable tools for modern facilities management.

## FASTER, CHEAPER, SAFER



# PRICE GUIDE

Prices for facilities management drones inspections and surveys vary according to the clients requirements, size of location, airspace regulations, complexities and data output required. The below is an approximate guide only. Accurate quotations provided upon request.

## Complexity 1

Standard residential property  
- up to 4/5 bedrooms

Small commercial /  
residential premises  
ie flat above a shop in  
a non-congested area  
(excludes town & city  
centres)

**From £300**

## Complexity 2

Complex residential /  
substantial domestic  
property

Small block of flats

Public Houses

Commercial premises with a  
footprint of less than 3000 sq  
meters

Small highways or  
infrastructure locations

**From £375**

## Complexity 3

As complexity 2 but where  
airspace permissions are  
required

Commercial premises with  
footprint greater than 3000  
sq meters but less than 8000  
sq meters

Medium sized highways or  
infrastructure

**From £500**

## Complexity 4

Commercial premises with  
footprint greater than 8000  
sq meters but less than  
15000 sq meters

Stately Homes / Manor  
Houses / Complex Roof

Higher Risk /Complexity

Large Highways or  
infrastructure

**From £750**

All above include photographs and video as standard.  
Premises over 15000 sq meters - POA

Orthomosaic mapping from £50 to £250 depending on size of location  
3D Modelling & Thermal Surveys - POA



## CONTACT US

**E-mail** [hello@jrpattesting.com](mailto:hello@jrpattesting.com)

**Website** [jrpattesting.com](http://jrpattesting.com)

**Phone** 0333 772 2155

**Address** 15 Erme Court, Leonards Road,  
Ivybridge, Devon PL21 0SZ